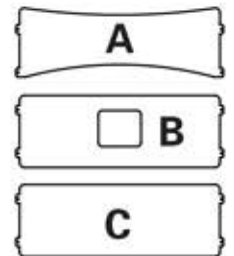
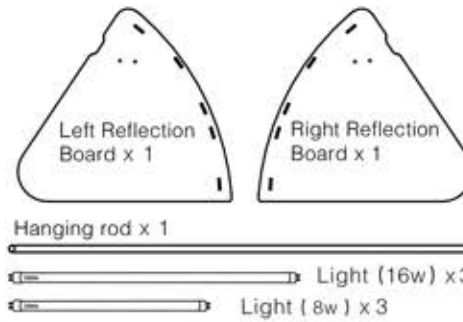




Made complexity become simple & Simplicity to the perfection



A- Arc-shaped reflection board
 B-Rectangular reflection board with hole
 C-Straight reflection board

Baby model Installation Manual



Place the studio (reverse up) on a table and open the six velcro on the sides.



Holding the light on the metal parts ,insert the light into the opening of the bracket.



Once the tube inside the opening,turn it 90 degree.



Hold the cover up,fix the left reflection board into the gap beside the left end of bracket.And fix the right reflection board into the gap beside the right end of bracket. Repeat procedure on the right side with board right



Pull out the power cord through the gap at the bottom of the right reflection board.



Take out the reflector A,B and C.



Pull out the white background to the front until the edge of bottom cover.



Insert the reflector A into the top part of left reflection board.



Bend reflector A a bit and insert it's right end into the top part of right reflection board.



Pull the reflector A to the front until it touch the top cover.Studio is now ready for shooting.



Tripod is highly recommended when taking product photos.



When shooting hanging item, insert the hanging rod into the holes of left and right reflection board.Hang your item on the rod and start shooting.



For low angle shooting, place the reflector B to the bottom position (as shown in the picture). Assemble A 1st, follow by B and C.



For middle angle shooting, place the reflector B to the middle position(as picture shown). Assemble A 1st, follow by C and B.



For high angle shooting, place the reflector B to the top position. Assemble B 1st, follow by C and A.

Little pins make the studio firm.

When using all three reflector boards insert ten little pin into both sides.



WITH **Simp-q Photo Studio** NO PHOTOGRAPHY SKILLS IS REQUIRED
JUST NEED TO REMEMBER **2 THINGS**

We assure that you can get a better photos with **Simp-q**

1 SHOOT THE PRODUCT IN BIGGER SIZE

Camera's pixel is not wasted. This will help in getting a better quality picture in developing photo, catalogue and poster.



2 Exposure composite in camera is a very useful function. By adjusting ± 0 or EV. It controls the brightness of photo. It is a secret to most of the photographers.

Using **P** mode in product shooting

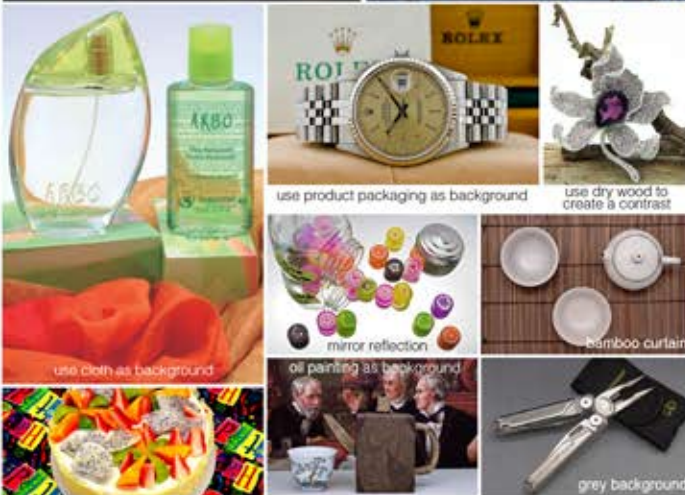
WHITE PLUS(+) When using a white background, set the exposure between +0.7 to +1.0 or more
BLACK MINUS(-) When using a black background, set the exposure between -0.3 to -0.7 or more

PRIMARY GUIDELINE

- Set the White Balance (WB)** to "Auto" or "Daylight".
- Turn off the flash.** In **Simp-q** photo studio, flash is not needed.
- When taking close-up shots, **set the camera on "macro" mode.**
- Use a tripod if possible** A slight vibration will cause the image blurred.

If you are not familiar with the camera settings mentioned above, please search more about it online according to your camera brand or get in touch with the after sales service hotline of the camera for more clarification.

You can use various of material to set up your **Simp-q** background. You can create a background to suite your product theme.



Use a few mirrors from different angles to reflect on the objects to highlight it.



It is also a pantone color matching tool.

Apart from taking photos, toy manufacturers, advertisement companies, clothing manufacturers, woolen cap manufacturers, etc. Uses the **Simp-q** for Pantone and CENT color matching.

Taking pictures of transparent or glossy product

Hold a paper with wordings (eg. news paper), touch the object and press the shuttle button partially to focus on the paper, once focus, pull out the paper, then snap the photo.



PS EDITING

Whether you are professional or amateur, you need to do editing with PS. (normally take about 1-2 minute) **Caution: If photo taken is not good, photo editing will make the photo look worst.**

Open PS
Image → Adjustments

→ Auto Tone
Auto Contrast
Auto Color



Or

Image → Adjustments
Brightness / Contrast
(Adjust accordingly to your liking)



Sharpen

Sharpen normally is the final step. It is to make the image to be more sharp and clearer. Using Filter → Sharpen → Sharpen (Smart sharpen)

Using · Close · Cleaning

Change background Hang the black background on the bracket and insert the half-moon edge into the bracket.



Diffuser is only applied when shooting glossy items.

Setting diffusion sheet

Hang the diffuser on bracket and insert the half-moon edge into the bracket (same as changing black background). Insert the left and right corner into the holes on reflection board (left and right)



Close



Place reflectors A, B and C crosswise under the background.



Fold the left and right reflection board on the top of A, B, C reflection board.



Place the black background and wire on the top of left and right reflection board.



Attention: When close the casing, follow arrow direction as shown in picture, make sure the top cover is inside the bottom cover. At last, pull the strap stick to the Velcro.



Cleaning tips

If background or reflector boards get dirty, clean immediately using a wet sponge and dish washer, then wipe dry using a moist cloth.

Simp-q Simple Quality

Made complexity become simple & Simplicity to the perfection